

MINISTRY OF TRANSPORT, CONSTRUCTION AND
REGIONAL DEVELOPMENT OF THE SLOVAK REPUBLIC

MANAGING AUTHORITY FOR THE OPERATIONAL
PROGRAMME TRANSPORT 2007 - 2013



OPD
DOPRAVA 2007-2013
operačný program



OPERATIONAL PROGRAMME TRANSPORT ROAD INFRASTRUCTURE PROJECTS

Bratislava, 18th November 2013

Ľuboš Ďurič



Implementation of MAJOR PROJECTS

Ministry of Transport – Managing Authority

Agencies for Modes Development (OP Beneficiaries) :

- National Motorway Company
- Slovak Road Administration (1st class roads)
- Slovak Railways (operator)
- Railway Company (rolling stock)
- Urban Transport Companies in Bratislava, Košice (trams, trolleybuses)



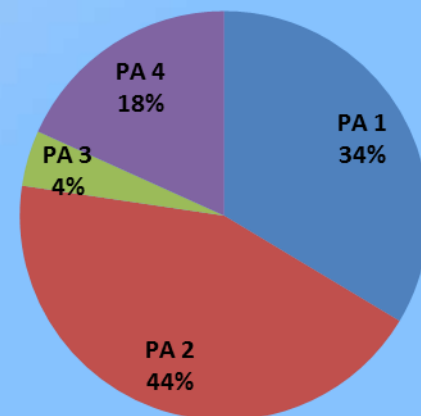
Operational Programme Transport Programming Period 2007 - 2013

Allocation: 3 790 719 991 EUR

7 Priority Axes:

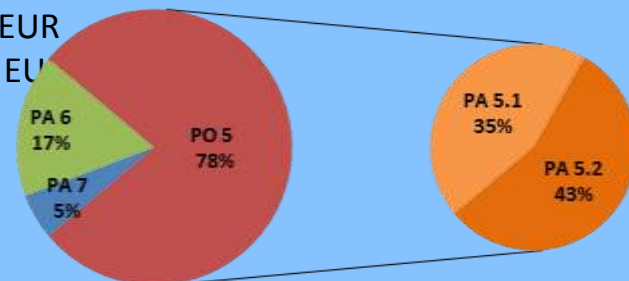
Cohesion Fund:

Priority Axis 1 – Railway Infrastructure:	2 740 582 399 EUR
Priority Axis 2 – Road infrastructure (TEN-T):	920 878 680 EUR
Priority Axis 3 – Intermodal transport infrastructure:	1 198 921 733 EUR
Priority Axis 4 – Infrastructure of integrated transport systems:	120 730 526 EUR
	500 052 000 EUR



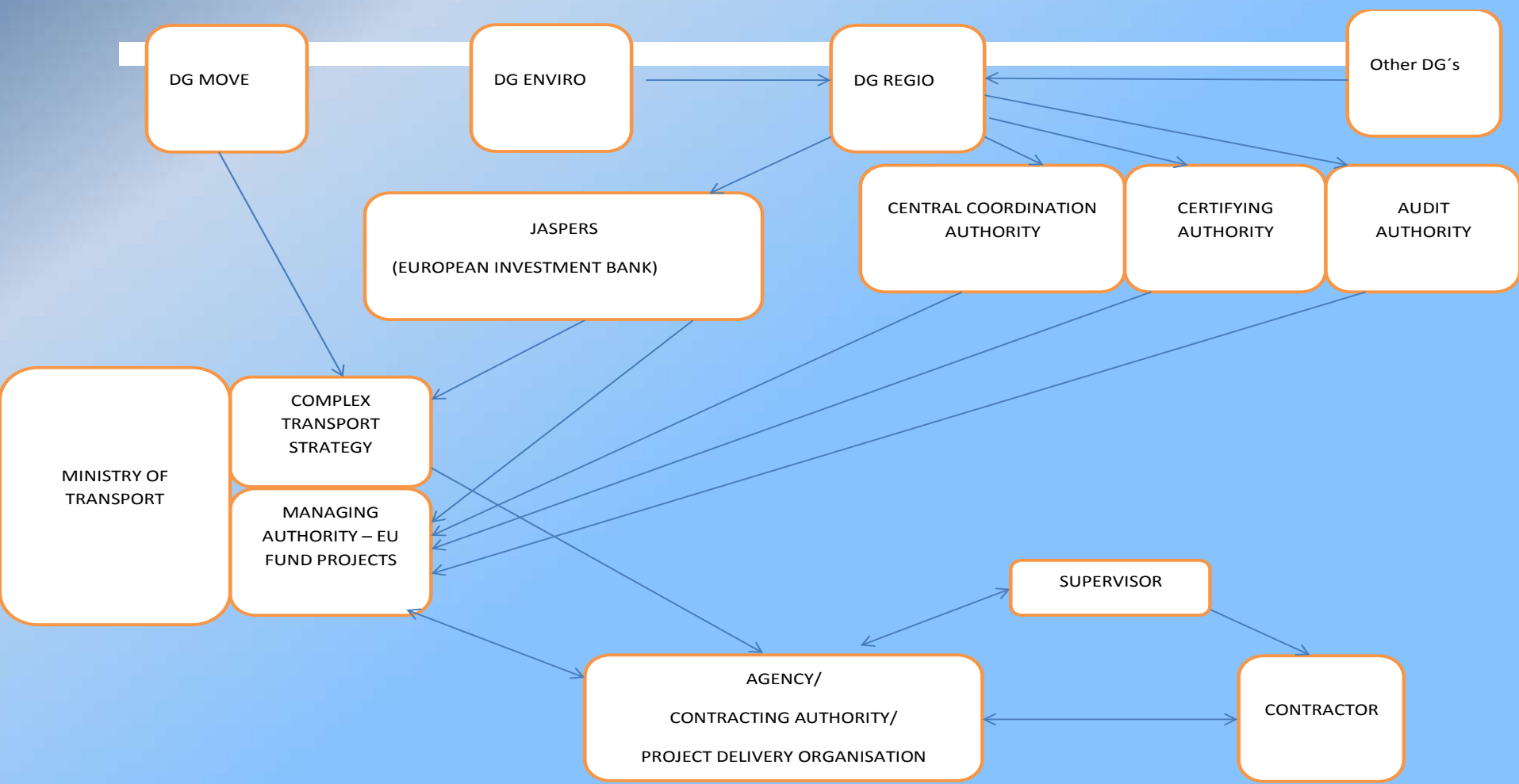
ERDF:

Priority Axis 5 – Road infrastructure (express and 1st-class roads):	1 050 137 052 EUR
Measurement 5.1 – Expressways:	816 523 484 EUR
Measurement 5.2 – First-class roads:	361 729 412 EUR
Priority Axis 6 – Public Railway passenger transport	454 794 072 EUR
Priority Axis 7 - Technical assistance:	177 021 134 EUR
	56 592 434 EUR





PROJECT STAKEHOLDER'S NETWORK





LESSONS LEARNED

➤ ENVIRONMENTAL ISSUES:

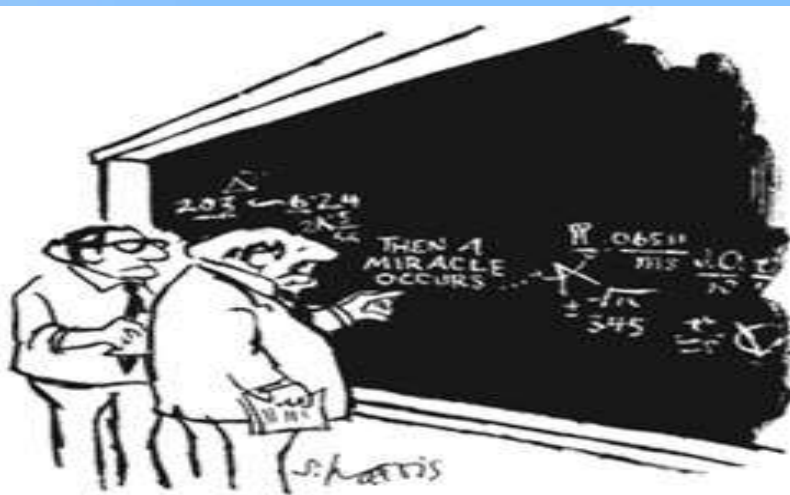
ALL ONGOING PROJECTS ARE IN ACCORDANCE WITH EU
DIRECTIVE ON EIA AND HABITATS.

ANY CHANGE OF PROJECT IS SUBJECT OF ENVIRONMENTAL
RE-ASSESSMENT.

➤ EFFECTIVE PROJECT

PLANNING:

EXTENDED FEASIBILITY
STUDY



"I THINK YOU SHOULD BE MORE
EXPLICIT HERE IN STEP TWO."



FOCUS CONCENTRATION

- **FEASIBILITY STUDY**
 - OPTION ANALYSIS
 - ROAD SAFETY AUDIT
 - TRAFFIC MODEL (O/D SURVEY)
- **PUBLIC PROCUREMENT**
(selection criteria used as award criteria, interim deadline)



CHALLENGES

- ALMOST ANY COST DEVELOPMENT DURING PROJECT CONSIDERED AS NON ELIGIBLE FROM EU FUNDS

Geological conditions are foreseenable in pre-construction survey.

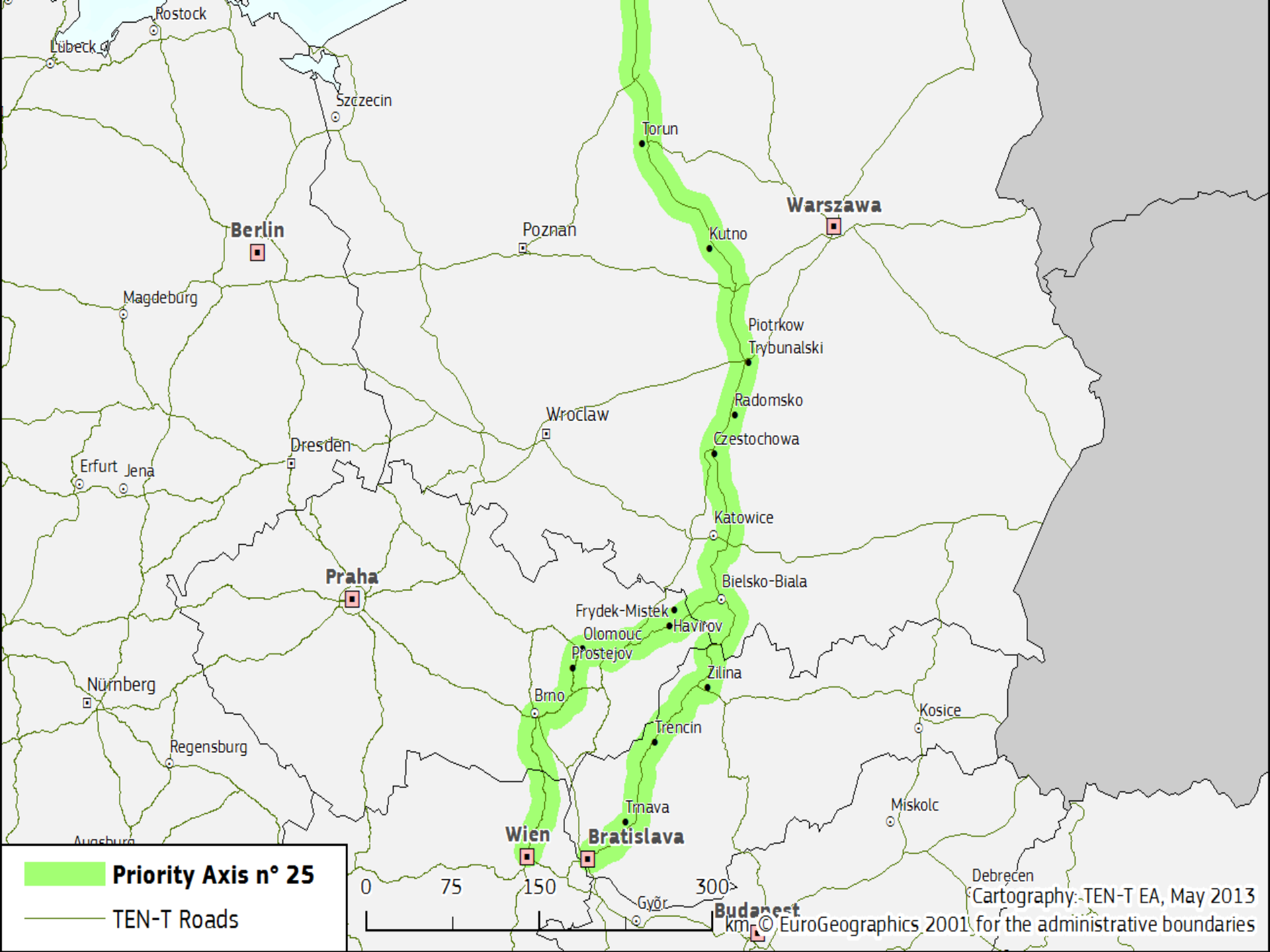
- UNIT COSTS – subject of discussion
European database essential
(NETLIPSE as data analyst?)



PAN-EUROPEAN TRANSPORT CONFERENCE in CRETE (1994)

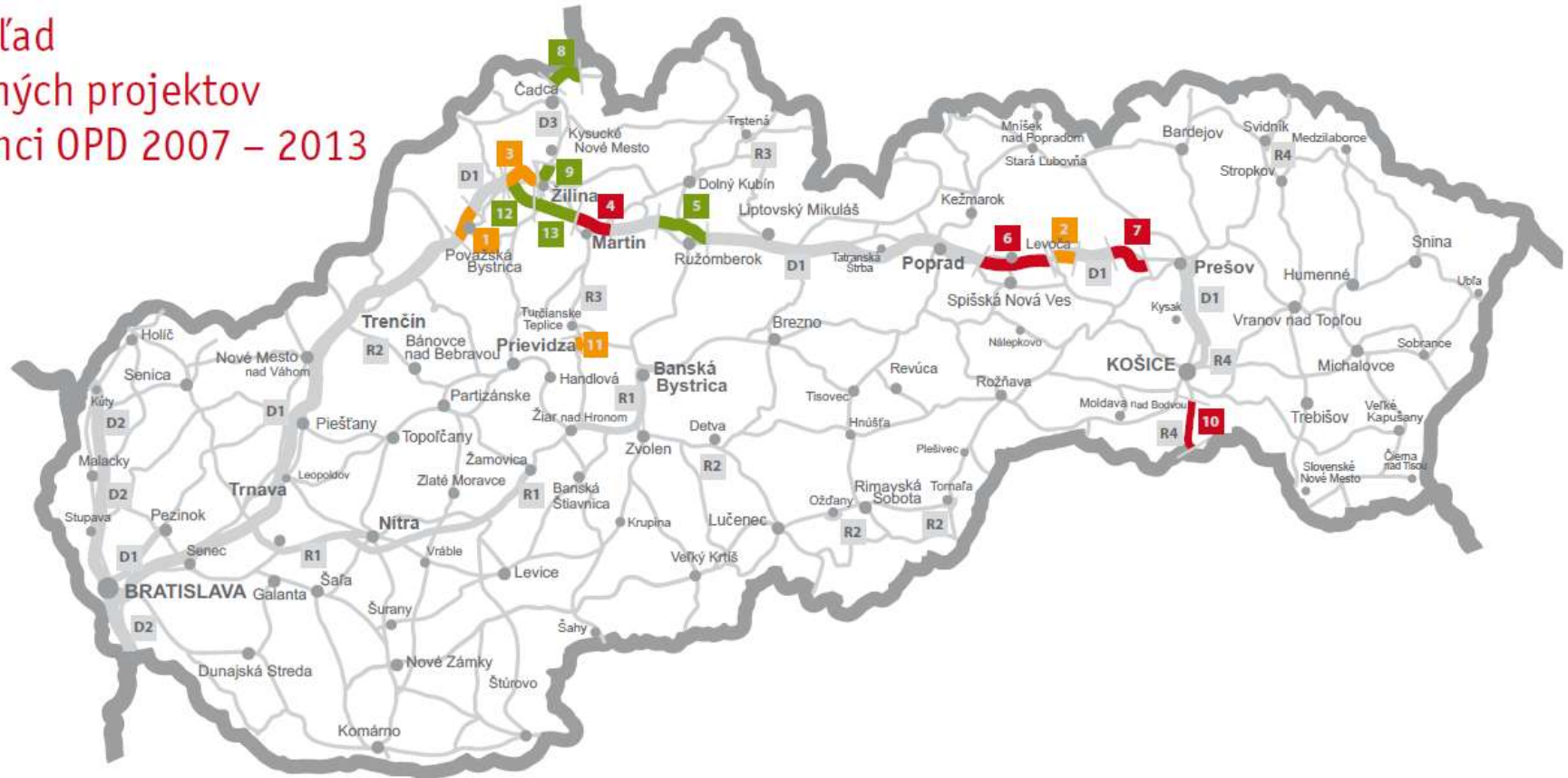
- Corridor IV -
 - Corridor V – branch A
 - Corridor VI
-
- **TEN-T CORRIDOR in Slovakia:**
 - BALTIC – ADRIATIC Corridor:
 - The Orient/East-Med Corridor
 - The Rhine-Danube Corridor





Priority Axis 2 – Road Infrastructure (TEN-T)

Prehľad cestných projektov v rámci OPD 2007 – 2013



Legenda

Prioritná os č. 2 - Cestná infraštruktúra (TEN-T)

- | | | | |
|---|---|----|--|
| 1 | D1 Sverepec – Vrtizer | 9 | D3 Žilina (Strážov) – Žilina (Brodno) |
| 2 | D1 Studenec – Behárovce* | 10 | R4 Košice – Milhošť |
| 3 | D3 Hričovské Podhradie – Žilina (Strážov) | 11 | R3 Horná Štubňa – obchvat* |
| 4 | D1 Dubná Skala – Turany | 12 | D1 Hričovské Podhradie – Lietavská Lúčka |
| 5 | D1 Hubová – Ivachnová | 13 | D1 Lietavská Lúčka – Višňové – Dubná Skala |
| 6 | D1 Jánovce – Jablonov | | |
| 7 | D1 Pričovce – Svinia | | |
| 8 | D3 Svrčinovec – Skalité | | |

- | | |
|---|----------------------------|
| 0 | Dokončený úsek v prevádzke |
| 0 | Úsek vo výstavbe |
| 0 | Úsek v príprave |
| D | Diaľnice |
| R | Rýchlostné cesty |
| — | Cesty I. a II. triedy |
| — | Štátna hranica |

*národné projekty (celkové náklady do 50 mil. eur)