

The NETLIPSE Programme update

Pau Lian Staal,
Programme Director
Vienna, November 25th 2014



1. NETLIPSE Development (1)



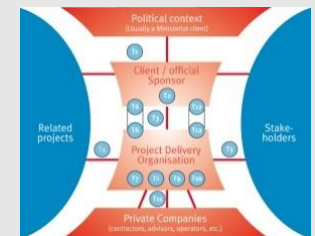
1. NETLIPSE 2006-2008 FP6 Research:

- Consortium of 8: public, private & research institutes
- Knowledge network
- 15 LIPs researched



2. NETLIPSE 2008-2010:

- Development of the knowledge network
- Development the Infrastructure Project Assessment Tool (IPAT)



1. NETLIPSE Development (2)



3. NETLIPSE since 2010:

- Maintain knowledge network
- Participate/initiate research projects
- PM-training programmes
- IPAT Assessor Training
- IPAT Assessments

2. Partners: public sector involvement



1. **Austria**
2. **Belgium**
3. Croatia
4. Czech Republic
5. **Denmark**
6. **Finland**
7. France
8. Germany
9. Greece
10. Hungary
11. Ireland
12. **Italy**
13. Lithuania
14. **Malta**
15. **The Netherlands**
16. **Norway**
17. **Poland**
18. **Portugal**
19. Slovak Republic
20. Slovenia
21. Spain
22. **Sweden**
23. **Switzerland**
24. **United Kingdom**
25. Russia

3. NETLIPSE 2014-2017 Strategic Plan (1)



The **objectives** of the NETLIPSE organisation are:

- To improve, promote and encourage the successful development, delivery and operation of large infrastructure projects throughout Europe.
- Aimed at positively influencing the living environment and economy in Europe.

3. NETLIPSE 2014-2017 Strategic Plan (2)



Characteristics of the network:

- Informal network with formal agreements.
- Not for profit.
- Open to public sector participants.
- Financed from donations and income from IPAT assessments, training programmes, etc.
- Focus on knowledge development, as well as knowledge exchange and marketing.

4. NETLIPSE: achievements 2014 (1)

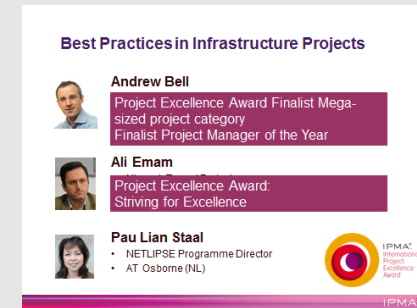


- Cooperation between Rijkwaterstaat (Project Academy) and Trafikverket (Programme for Professional Project Management)
 - 2 Trafikverket trainees in Amsterdam
 - 23 Trafikverket project directors and staff to RWS/ProRail/Metro Department Amsterdam
- FUNDTIPSE application (Horizon 2020):
Funding **T**ransport **I**nfrastructure **P**rojects **i**n **E**urope
(Facilitating decision making on (exploratory) funding schemes for the design and implementation of future transport infrastructure projects).

4. NETLIPSE: achievements 2014 (2)



- World Class Project workshop IPMA World Congress Rotterdam 30th Sept
Member: NETLIPSE Best Practices (IPMA Euro working Group)
- Designs, Methods and Practices for Research of Project Management (Gower)
- 10 new IPAT Assessors
- 2 Network Meetings



5. NETLIPSE: focus 2015



- 5 IPAT Assessments
- 2 Network Meetings
- Small projects:
 - Tendering & Procurement (CEDR?)
 - NETLIPSE Project Academy for senior Project Managers / Project Directors
 - NETLIPSE website as support for knowledge exchange
 - ?

6. Or wonder/suggest cards...



I wonder/suggest...

Please hand in this card to someone from the NETLIPSE Board.
Thank you!

Or contact:

Pau Lian Staal-Ong, ✉ pst@atosborne.nl ☎ +31 6 55 364 770